

# ProKure®

An ultra-lightweight  
sprayer solution.

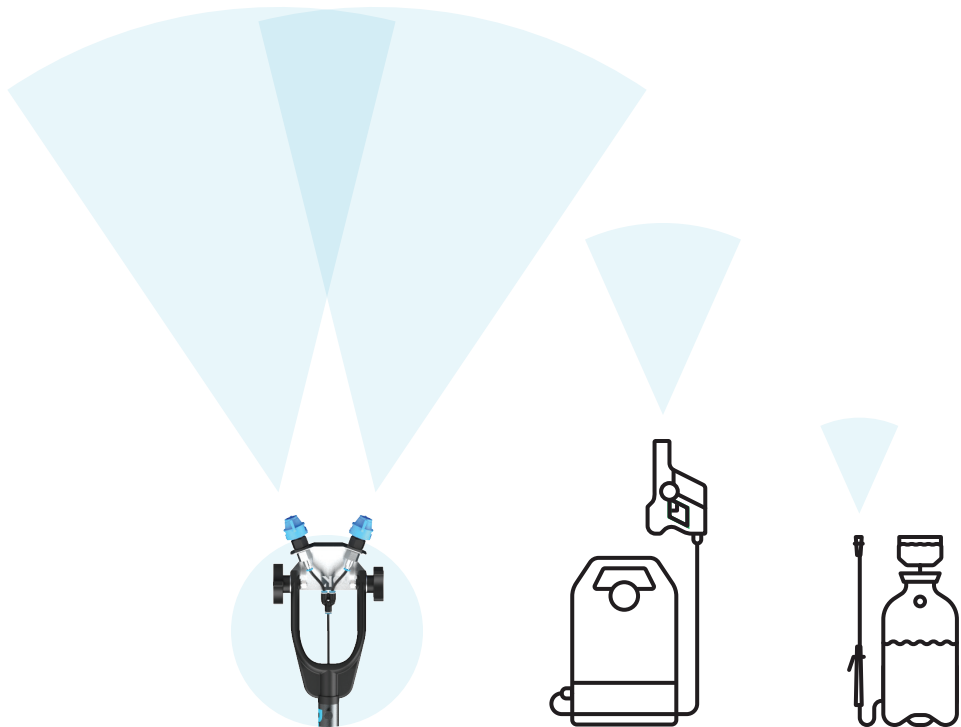
## ProKure® S1

# Owner's Manual

ProKureSolutions.com  
866.206.1301

Welcome!

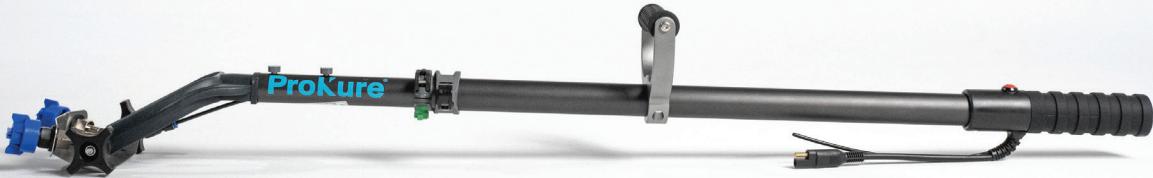
Thank you for purchasing the ProKure S1 – your ultra-lightweight sprayer solution for maximum coverage, product durability, and sprayer modification to meet your specific treatment needs.



	ProKure S1	Electrostatic Sprayer	Pump Sprayer
Volume (GPM)	2 GPM	.02 GPM	.26 GPM
Max Weight (Including Backpack)	10 lbs.	30 lbs.	50 lbs.
Battery Life	2-3 Hours	2 Hours	N/A

Table of Contents

INTRODUCTION	01
COMPONENTS	05
PREP & USE	11
ASSEMBLY	11
CONNECTION TO LIQUID CONTAINER	12
RECHARGING YOUR BATTERY	13
CHANGING SPRAY TIPS	14
LIABILITY	15
WARRANTY	16
CONTACT	17





What's Included





ProKure S1 Overview

1

Soft Rubber Handle

2

On/Off Switch

3

Durable Aluminum Tubes

4

Control Handle

5

Flip Clip

6

Extendable Wand from 3 ft.-5 ft.

7

Rotatable Sprayer Head

8


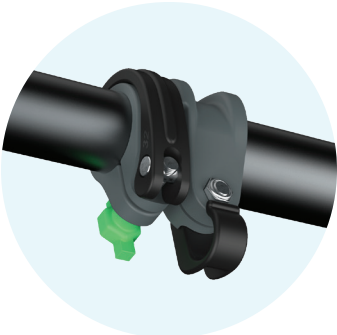
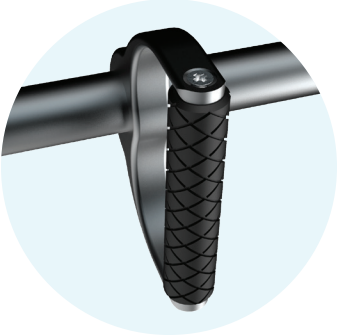

Y Push-Splitter

9

Stainless Steel Head

10

Dual Sprayer Tips



6

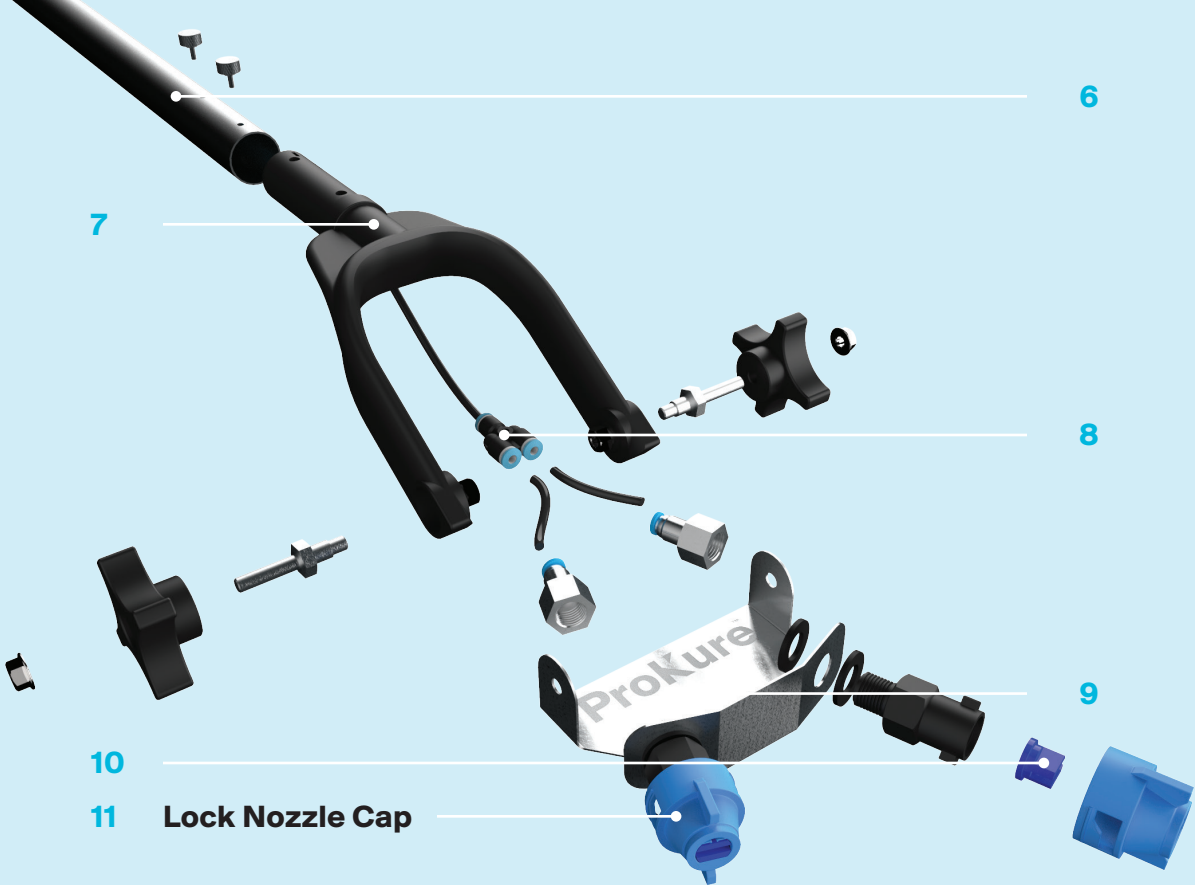
7

8

9

10

11





4 Lbs

Weight

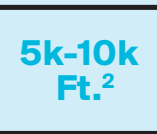


2 Gallons  
(8 Liters)

Flow Rate  
Per Minute

3-8'

Optimum  
Spray Distance



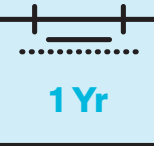
5k-10k  
Ft.<sup>2</sup>

Coverage Per  
5-Gallon  
Container



16.5  
Acres

Coverage Per  
Charge

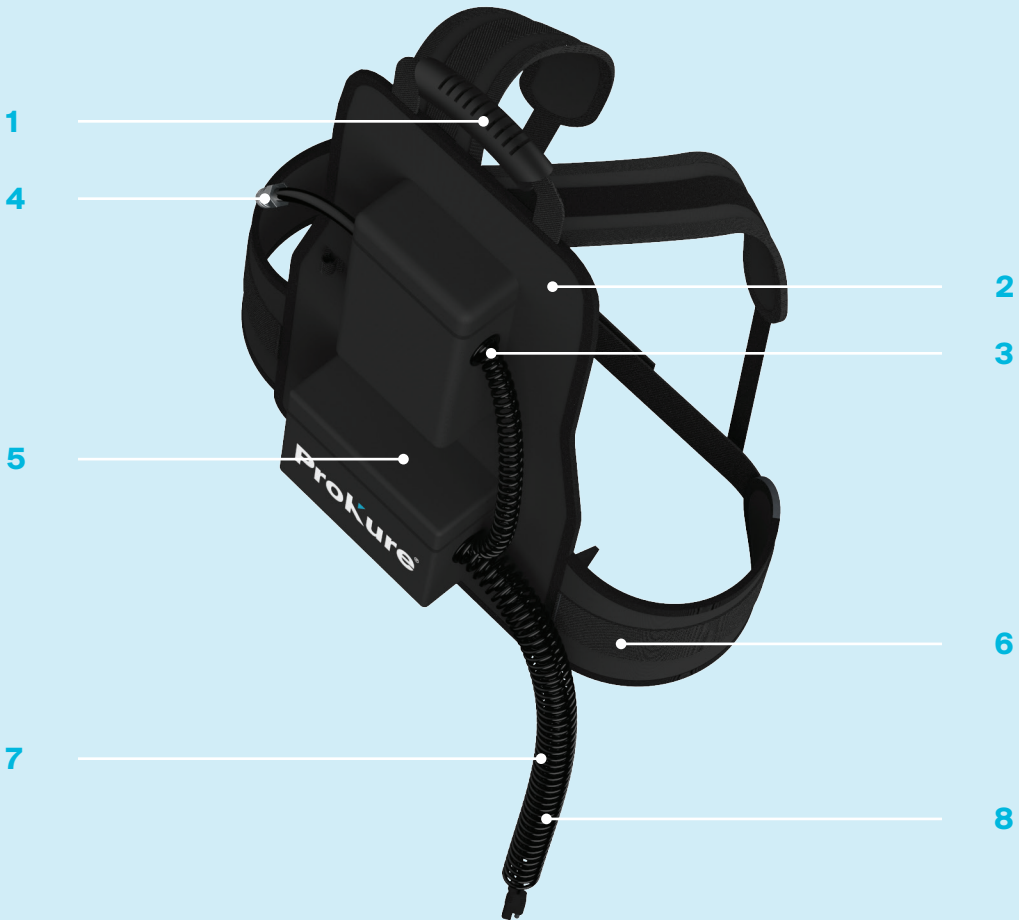


1 Yr

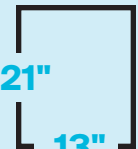
Limited  
Warranty



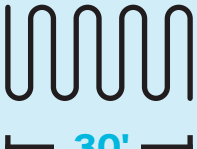
Backpack Overview



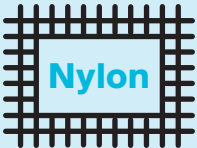
Weight  
(With Battery)



Width  
& Height



Hose  
Included



Material



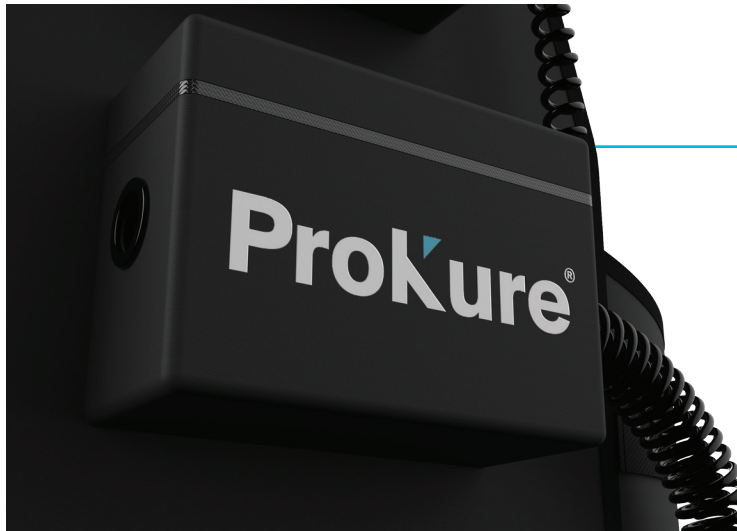
Mobility



Connects to  
Any-Size Liquid  
Container



Battery Overview



PRO TIP

Make sure your battery is fully charged before treatment.



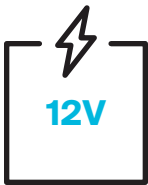
4 Lbs

Weight



160 PSI

Pressure



12V

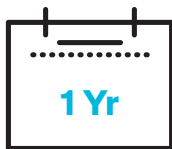
Voltage



Constant-Use  
Run Time  
Per Charge



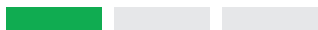
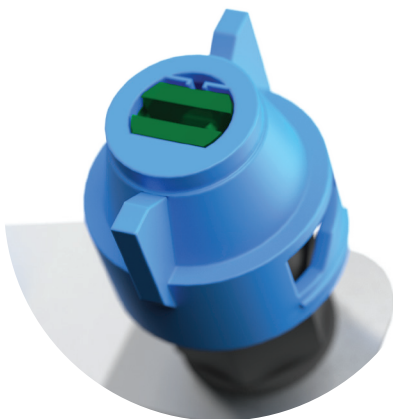
Time Required  
for Full  
Recharge



Limited  
Warranty

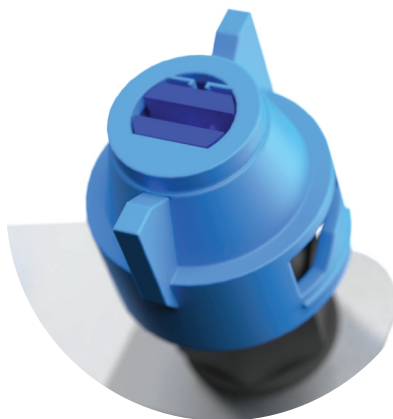
Spray Tip Options

GREEN TIPS



Fine Mist

BLUE TIPS



Heavy Spray

REORDERING SPRAY TIPS

Call ProKure at **866.206.1301** or e-mail us at **sprayers@prokure1.com**.



## Assembly



**STEP 1:** Unpack shipping container. Unhinge flip clip to adjust spray head position and wand length.



**STEP 2:** Put on the backpack. Fasten shoulder and waist straps to comfort.



**STEP 3:** Connect ProKure S1 to the backpack with power and water connector cords.



**STEP 4:** Connect the backpack to liquid container. See Page 11.



SCAN ME FOR VIDEO INSTRUCTIONS



## Connection to Liquid Container



**STEP 1:** Remove 5-gallon container from shipping container and fill with water.



**STEP 2:** Insert the quick-connect devices into each other, found on the 30' blue hose and the tube attached to the 5-gallon container cap.



**STEP 3:** When sprayer is first turned on after connection, expect a few seconds for the motor to draw liquid for maximum spray.



SCAN ME FOR VIDEO INSTRUCTIONS





## Recharging Your Battery



**STEP 1:** Unpack battery charger, found in the white box within the shipping container, and insert into the battery pouch on the backpack.



**STEP 2:** Connect battery charger to a wall outlet.



**STEP 3:** Insert battery charger cord into the cord coming from the battery pouch, on the outside of the backpack. Let the battery charge for 8 hours or until the charger indicator light turns green.



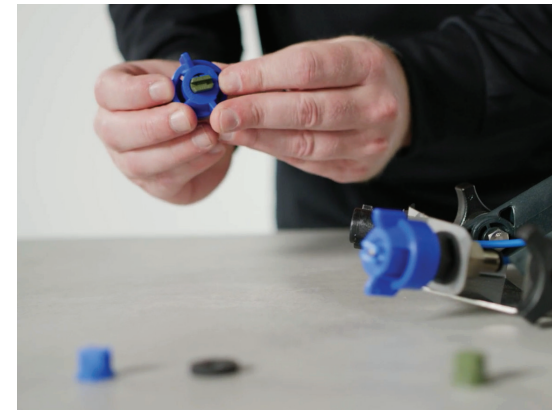
SCAN ME FOR VIDEO INSTRUCTIONS



## Changing Spray Tips



**STEP 1:** Twist lock nozzle cap counterclockwise. Handle with care, so as not to misplace spray tip and rubber washer.



**STEP 2:** Push spray tip out of lock nozzle cap and replace with desired spray tips. Place sprayer tips in first, followed by the rubber washer.



**STEP 3:** Twist lock nozzle cap clockwise. Lock nozzle cap is fully secured after a complete and firm rotation.



SCAN ME FOR VIDEO INSTRUCTIONS





## Liability

When using electric products, basic safety precautions should always be followed to reduce the risk of electric shock and personal injury, including the following:

- Consider your work area environment. When using the ProKure S1 be aware of overhead electrical wires.
- ProKure S1 is powered by DC current only. Do not attempt to operate ProKure S1 with AC current.
- Always flush out chemical with clean water after every use.
- Never pull the ProKure S1 by its cord or yank it to disconnect it from the battery.
- Keep the cord away from heat, oil and sharp edges.
- Keep your ProKure S1 clean. (For safer operation, follow instructions for attaching accessories. Keep the upper handle switch area dry, clean and free from oil, grease and water).
- Disconnect the ProKure S1 when not in use and when attaching accessories.
- Inspect for damage before using ProKure S1.
- When servicing, use only genuine parts and accessories.
- ProKure S1 is a power tool. As with any power tool, always use both hands to ensure safe operation.
- Ensure you adopt the correct posture when using ProKure S1. Maintain a straight back.
- Adjust the position of the control handle (see Page 14), so your arm is straight when holding the handle. Your back should be straight at all times. Save these instructions for future reference.

## Warranty

### LIMITED ONE-YEAR WARRANTY

#### ProKure S1 Sprayer

The ProKure Team is focused on helping professionals complete a wider range of work, more profitably. The ProKure S1 Sprayer was built with this focus in mind. Our aim is to provide a sprayer that can be used for a variety of jobs all day, every day without failure. We want you to be 100% satisfied with your ProKure S1 Sprayer, in the rare event a fault should occur, we are here to help and ensure that your sprayer is back up and running as soon as possible.

So that we can cover your warranty fully, please follow our terms. Every ProKure S1 Sprayer is thoroughly inspected and tested before leaving the factory. This warranty covers the sprayer solely and not the 5-gallon container or connector. The sprayer is warranted to be free from defects in workmanship and materials, for the period of one year from the date of original purchase.

Should any problem covered by this warranty develop during the one-year period, follow the instructions in this User Guide and return the unit, carefully packaged with freight prepaid to your original supplier. Your supplier will inspect the item and if inspection shows the problem was caused by a defect in workmanship or materials, then your supplier will repair (or at our joint option, replace) the unit without charge, return freight prepaid.

### PLEASE DON'T VOID YOUR WARRANTY BY:

- Mistreating, misusing or improperly maintaining or operating the sprayer.
- Making alterations to the sprayer.
- Repairing or attempting to make repairs by anyone other than an authorized ProKure S1 Sprayer agent, unless authorized to do so in writing from said agent.

Register your warranty at:

[www.prokuresolutions.com/products/prokure-s1](http://www.prokuresolutions.com/products/prokure-s1)

# **ProKure<sup>®</sup>**

---

**866.206.1301**  
**[www.prokuresolutions.com](http://www.prokuresolutions.com)**

**5013 E. Washington Street, Suite 130**  
**Phoenix, AZ 85034**